

PSM-8

HYDRAULIC DRILLING RIG



PSM-8

HYDRAULIC DRILLING RIG

A new model

The new PSM-8 is a multipurpose drilling rig. Its modular design is engineered for the execution of: Micropiles, Tie-backs, Jet-Grouting, Coring, Drain, Water wells.

The rig is fitted with partial proportional, hydraulic servo-assisted controls that make the operations smooth and easy. Featured with a partial Load Sensing System, it has lower running costs and a reduced wear and tear on components.

Thanks to a particular kinematic mechanism (composed of: 650 mm extendable boom; swivelling $\pm 23^\circ$; joint 90° ; and the optional motoreducer slew rig for radial drilling) **the PSM-8 is a versatility unit that can be tailored to any customer need or geological conditions.**

It is possible to choose several optional equipment for the different technology and ground needs.

The PSM-8 may be further tailored with a wide range of optional items such as:

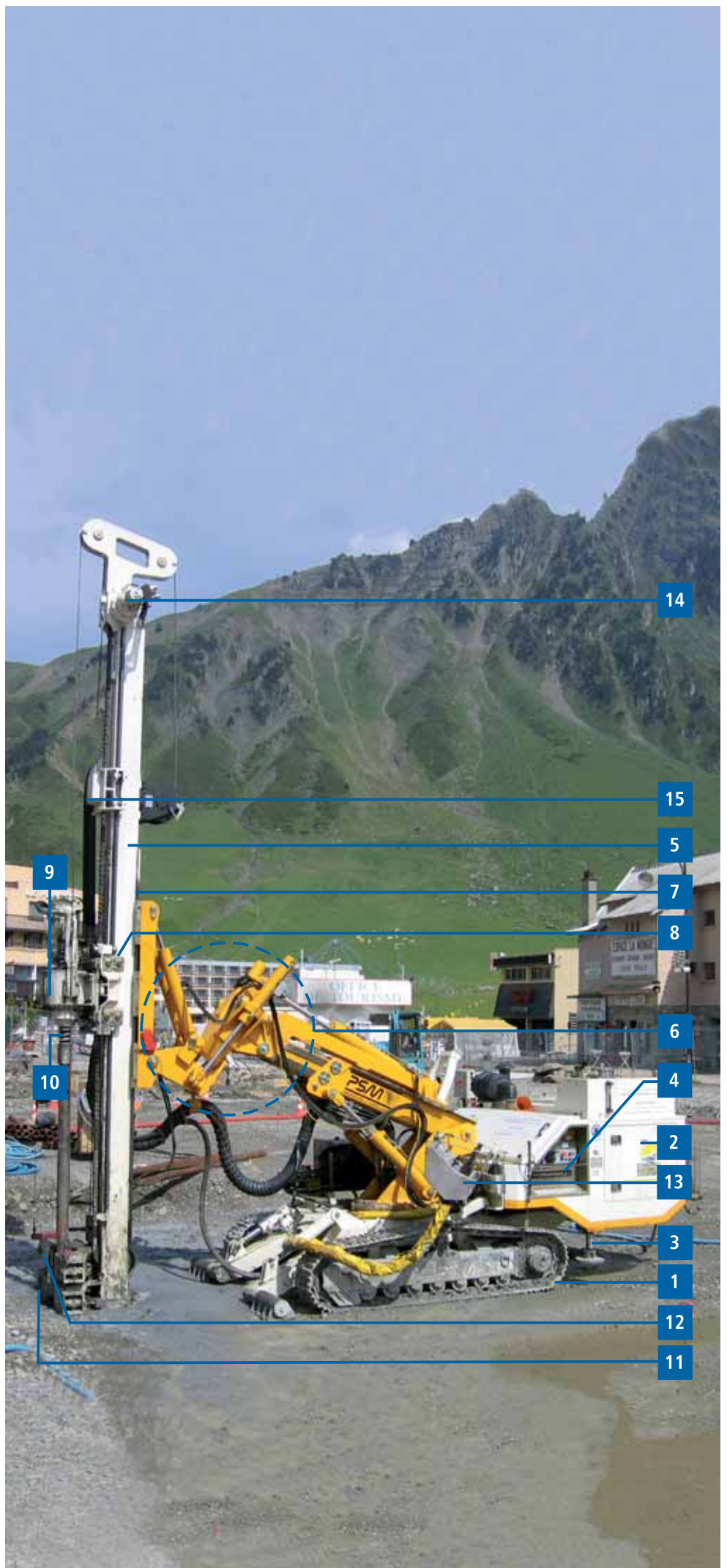
- Jet grouting kit;
- Triplex mud pump;
- Double rotary;
- Top Hammer;
- Rod carousel (3 rods);
- Slew ring < for radial drilling
- Radio operated remote control.

Engine		
Model		DEUTZ TCD 2012 L04 TIER III
Max power	KW (BHP)	103 (140) @ 2400 rpm
Hydraulic System		
Main pump and service pumps	l/min	149
Max work pressure	MPa	28
Rotary head		
Max torque (28 Mpa)	daNm @ rpm	1024
Rotation speed	rpm	381
Mast feed/hoist system motoreducer		
Rod length	m	3000 (1500)
Standard cradle stroke	mm	3900
Max hoist force	daN	6000
Max feed force	daN	6000
Max speed (slow/fast)	m/min	0-17 / 35
Clamp and breaker		
Clamping range	mm	60 - 260
Max clamping force	daN	1100
Max breaking torque	daNm	3600
Service Winch		
Max line pull in 1 st layer	daN	1500
Rope max speed in 4 th layer	m/min	38,5
Rope diameter	mm	10
Undercarriage		
Shoe	mm	300
Overall length	mm	2474
Overall width	mm	1900
Max speed	km/h	2.36
Weight		
Total weight	kg	8500/9200
Average pressure on ground	MPa	0,063

PSM-8

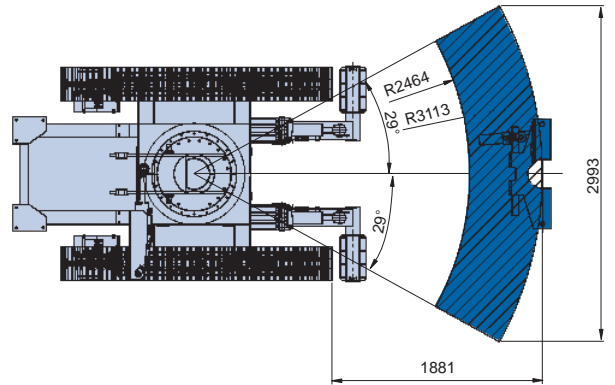
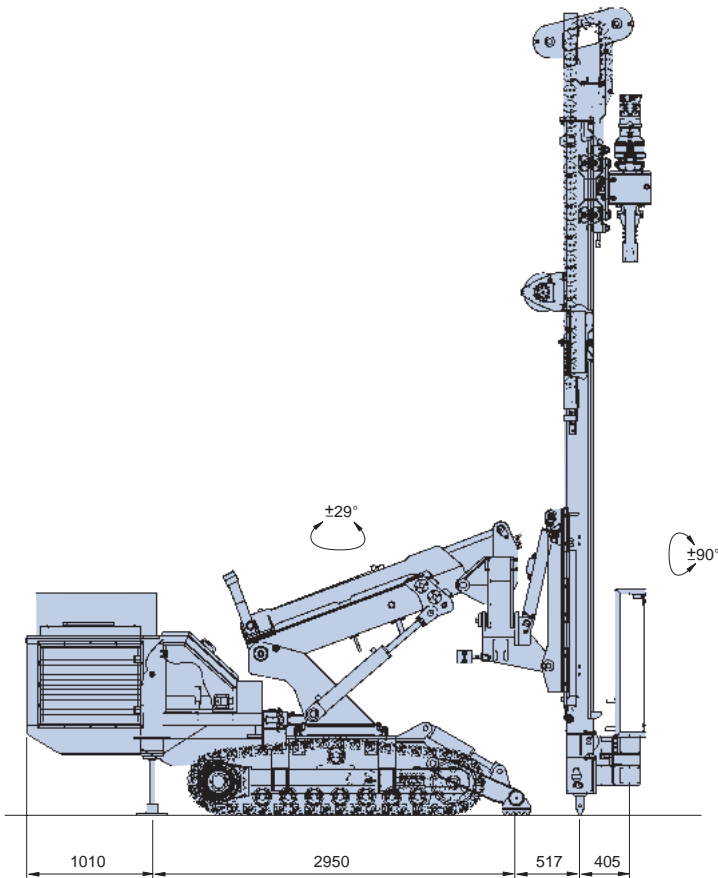
MAIN FEATURES

- 1 - Crawler undercarriage.
- 2 - Machine body including prime mover, hydraulic plant with **load SENSING** partial and soundproof canopy.
- 3 - N° 4 hydraulic outriggers.
- 4 - Control levers for rig positioning.
- 5 - Mast.
- 6 - 0 - 90° mast articulation.
- 7 - 1000 mm stroke cylinder for mast shoring.
- 8 - Rotary cradle with adjusting rollers and 400 mm side-shifting facility.
- 9 - Rotary 1024 daNm / 381 rpm.
- 10 - Floating system.
- 11 - Clamp max. diam. 260 mm.
- 12 - Breaker max. diam. 260 mm.
- 13 - Control board on rotating arm for drilling and service functions.
- Pre-arrangement for Remote **Control**.
- 14 - Service winch with jib.
- 15 - Guide for hydraulic hoses.

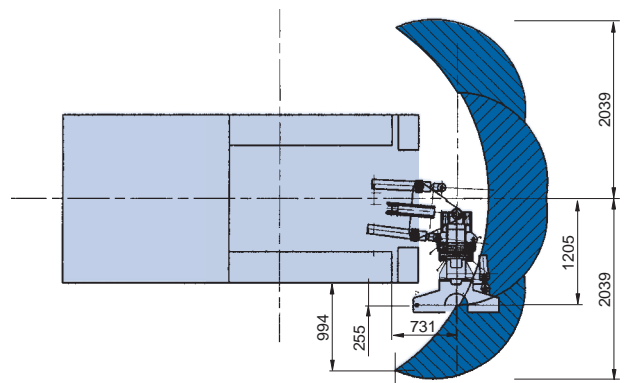


PSM-8

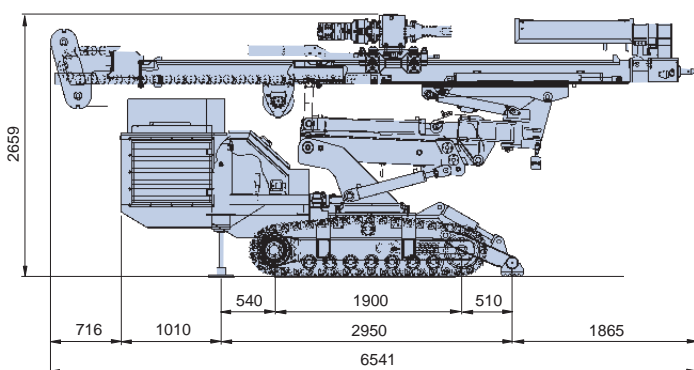
HYDRAULIC DRILLING RIG



Working area with mast rotation 90°

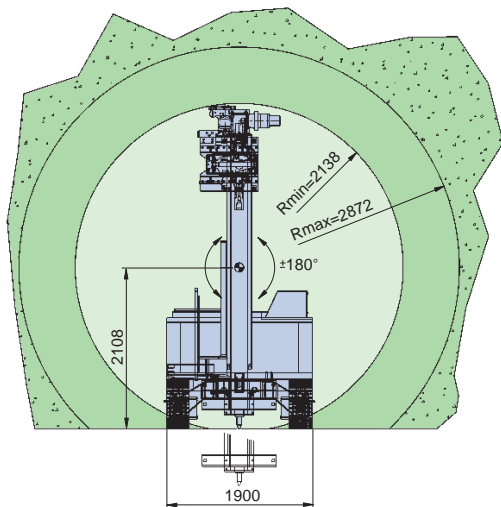
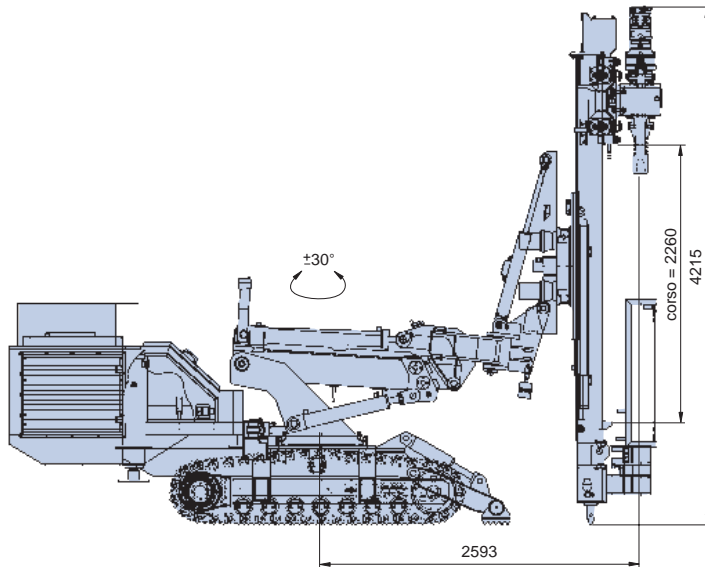


Transport Conditions



PSM-8

ANCHORS - MICROPILE



DOUBLE ROTARY type DR8

Upper Rotary
Max torque 600 daNm

Lower Rotary
Max torque 1000 daNm



Figures



SOILMEC distributes machinery and structures all over the world, supported by SOILMEC subsidiary companies and representative offices as:

SOILMEC LTD - U.K.

SOILMEC MISR S.A.E. Co. - Egypt

SOILMEC (H.K.) Limited - Hong Kong

SOILMEC JAPAN CO LTD - Japan

SOILMEC S.P.A. - Beijing Repr. Office - P.R. China

SOILMEC FAR EAST PTE.LTD - Singapore

SOILMEC ARABIA LLC - Saudi Arabia

SOILMEC EMIRATES - U.A.E.

SOILMEC GULF - U.A.E.

SOILMEC FRANCE S.A.S. - France

SOILMEC INDIA - India

SOILMEC S.P.A. - Moscow Repr. Office - Russia

SOILMEC DEUTSCHLAND GmbH - Deutschland

SOILMEC NORTH AMERICA - Boston - USA

CERTIFIED QUALITY SYSTEM

In 1990 Soilmec was awarded with the certification of its Quality System complying with ISO 9001:2000 and ISO 14001:2004 standards.



SOILMEC S.p.A.

Drilling and Foundation Equipment

5819, via Dismano

47023 Cesena (FC) - Italy

tel. +39-0547-319111

fax +39-0547-318548

[http:// www.soilmec.it](http://www.soilmec.it)

e-mail: soilmec@soilmec.it

All technical data are purely indicative and subject to change without notice

soilmec 
Drilling and Foundation Equipment